

U.S. Geological Survey

Focus and Vision for the Illinois River System

Robert R. Holmes, Jr., PhD, P.E.
Director, USGS Illinois Water Science Center



What is the USGS?

- Earth and Biologic Science Agency within the Department of the Interior
- Four Disciplines
 - Biological Resources
 - Geography
 - Geology
 - Water Resources



Areas of USGS Focus for Illinois River System

- Data Collection and Dissemination
- Long-term Resource Monitoring Program (LTRMP)
- National Water-Quality Assessment (NAWQA)
- USGS Cooperative Program for Interpretive Studies
- The National Map

Data-Collection Program

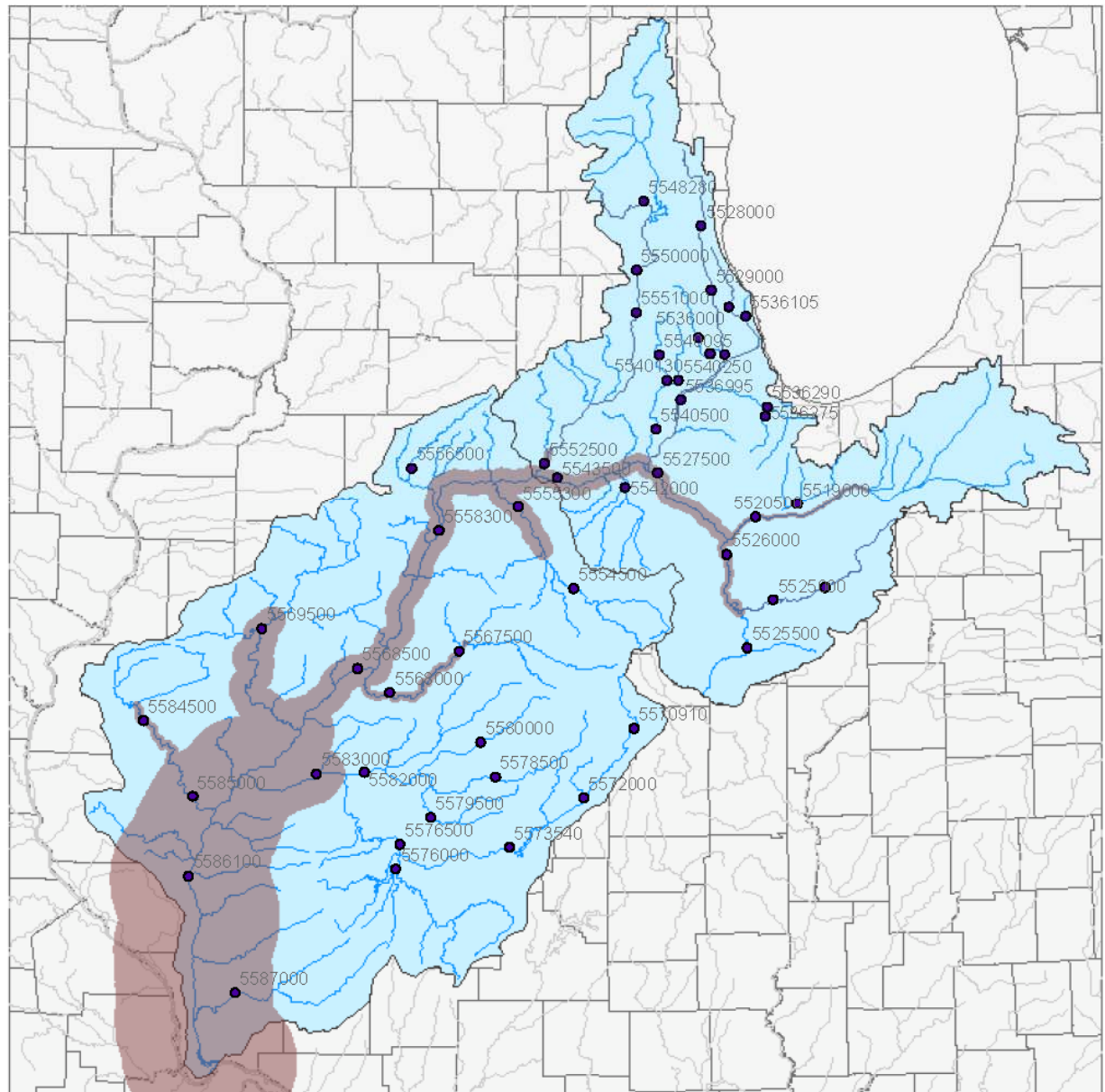
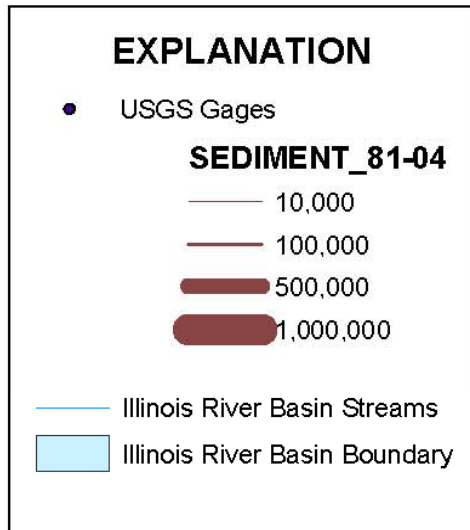
Over 25 Federal, State, and Local Cooperators





 **USGS**

Sediment Average Load (Tons/Year), 1981-2004

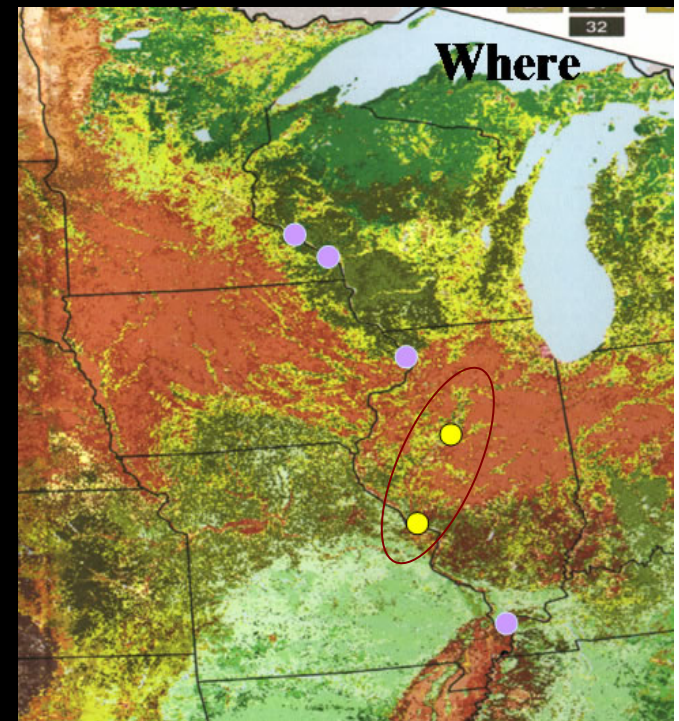
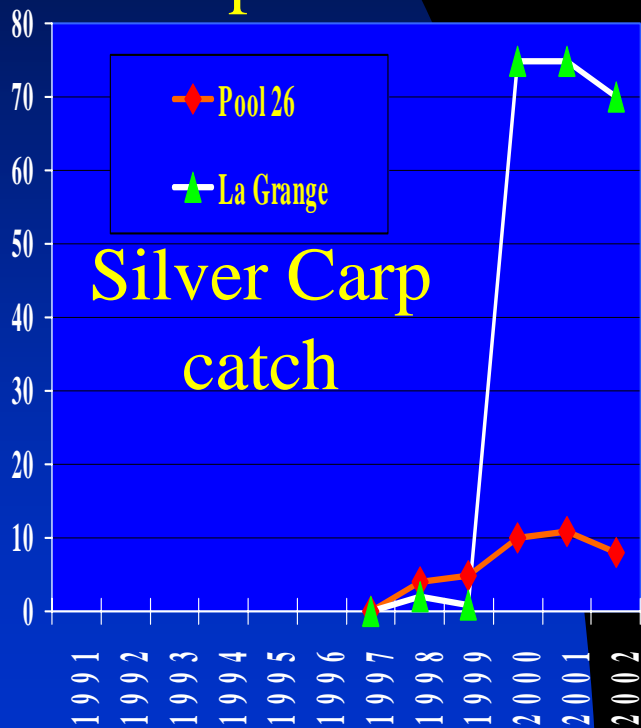


Long-term Resource Monitoring Program

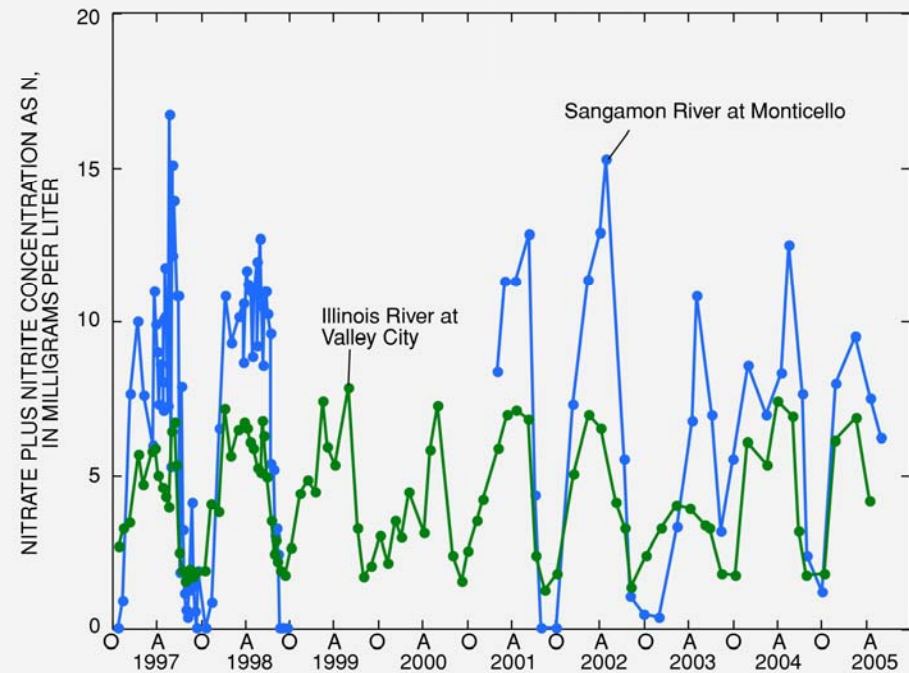
Natural Resource Data for the Illinois River

- Fish
- Water Quality
- Invertebrates
- Aquatic Vegetation
- Terrestrial Vegetation
- Land Use and Cover

Example Product



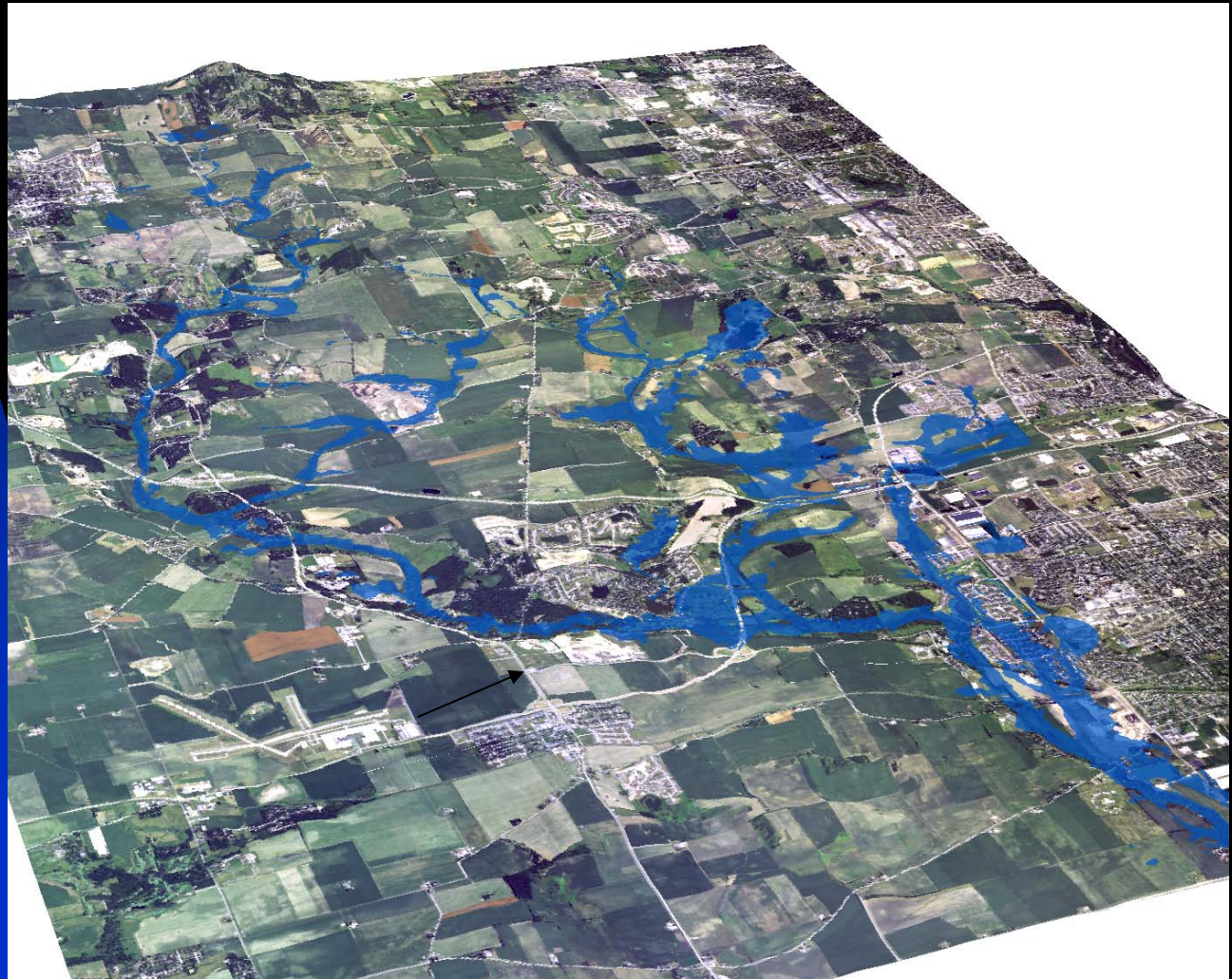
National Water Quality Assessment



USGS Cooperative Studies

Flooding Issues

Cooperation--Kane County,
IDNR, and FEMA



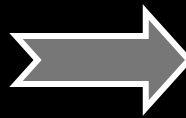
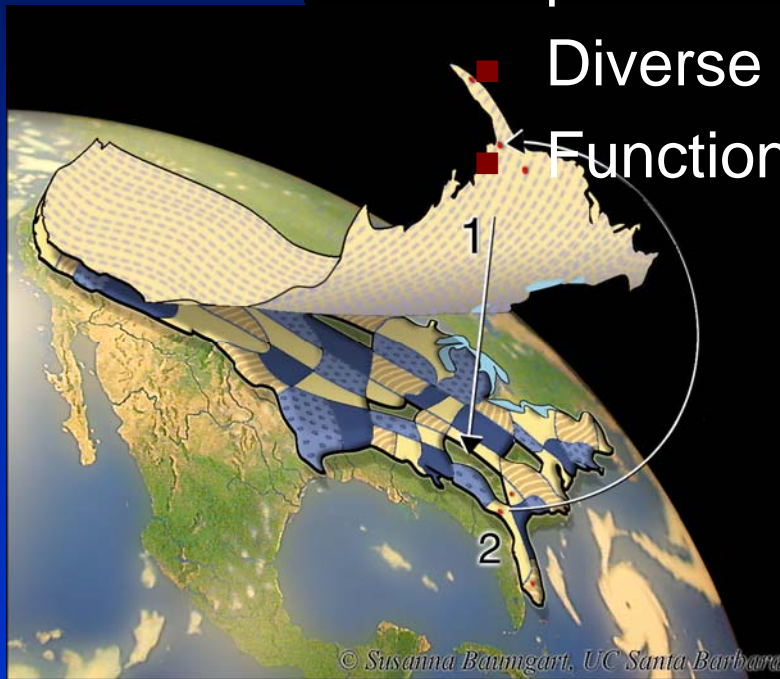
Stream Restoration/Dam Removal



Brewster Creek Dam
Cooperation—Kane County

The National Map - A Tapestry of Base Content

- More than a blanket; more than a patchwork quilt
- Diverse and varied by design
- Functional and elegant



USGS Vision

USGS is a world leader in the natural sciences through our scientific excellence and responsiveness to society's needs

